

A wide range of indications – and now there are even more.

- Single Crown (anterior and posterior)
- Splinted Crown (up to 4 abutments)
- All 3- and 4-unit bridges
- Cantilever bridge with max. 1 abutment on second premolar or on incisors*
- 5- and 6-unit bridges with max. 2 pontics in the posterior region
- **NEW!** 5- and 6-unit bridges with max. 4 pontics in the anterior region
- **NEW!** Inlay bridges*
- **NEW!** Maryland bridges*
- **NEW!** Implantat-Abutments
- **NEW!** Primary telescopes



Custom Zirconia Abutments for a wide variety of implant systems



Inlay and Onlay Bridges



Maryland Bridges



Primary Telescopes



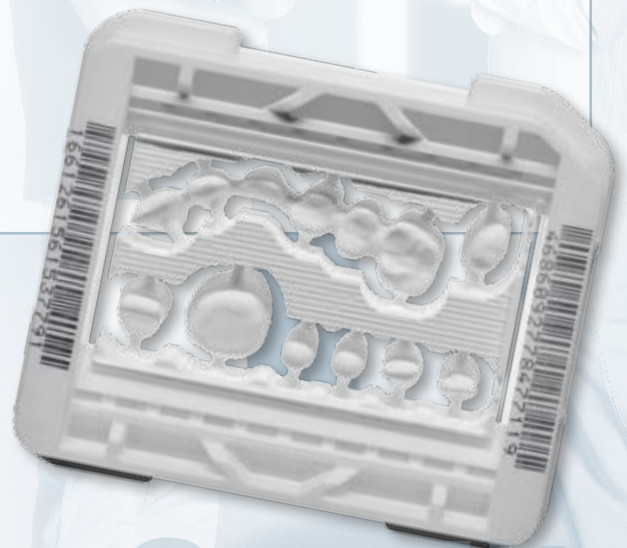
6-Unit Anterior Bridges with up to 4 pontics

Top quality, enhanced productivity: the new Lava™ Multi Frame makes it possible.

The excellent performance of zirconium oxide material has been demonstrated many times. The new Lava multi frame also boosts productivity: several Lava frames can be milled from a single workpiece.

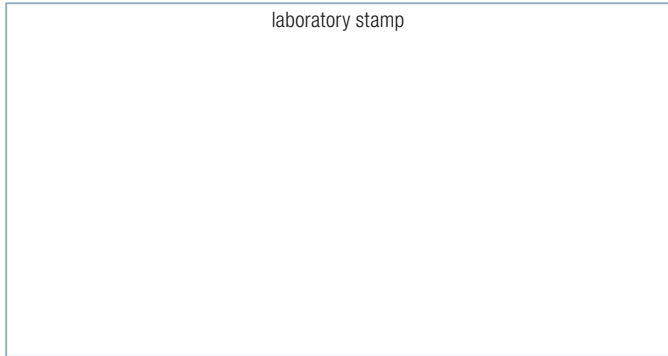
With the new Lava multi frame, these advantages become even more obvious:

- Several single-unit cases can be combined in one block – with automatic placement in blanks by the nesting function of the Lava design software.
- As a result, Lava milling centres – and we as your lab – can increase their productivity and consequently their efficiency.
- For your practice, this means the cost of Lava restorations becomes comparable to that of PFM. That takes the burden off health insurance plans and other insurers and reduces patients' co-payments.
- The bottom line: You as a dentist can offer top quality without incurring higher costs than for conventional PFM.



Quality

* Tests have proven: Lava™ Zirconia shows a sufficient strength for this indication. However, this type of indication overall can have a higher failure risk due to decementation and secondary caries regardless of manufacturer. Please refer to national and regional dental associations for more information.



You + 3M ESPE =
New ideas for dentistry

3M ESPE

3M ESPE
Morley Street
Loughborough
Leicestershire LE11 1EP
Freephone: 0800 096 13981
Email: 3MESPE@mmm.com
Website: www.3MESPE.co.uk/lava

3M Ireland
3M House, Adelphi Centre
Dun Laoghaire
Co. Dublin

3M, ESPE and Lava are trademarks of 3M or 3M ESPE AG.
Cerec™ of Sirona, Cercon™ of DeguDent, Digizon™ of KCS, E.Max™ and
Empress™ of Ivoclar Vivadent, Etkon™ of Straumann, InCeram™ of Vita,
Procera - Nobel Biocare, Sirona - (see Cerec above), Wieland™ of Wieland,
DC Zirkon is not a trademark of 3M ESPE
©3M 2008. All rights reserved.

01 (x.2008)

Lava™
Precision Solutions



Time for a change:

Zirconia
is the Future!



3M ESPE

The Lava™ Precision Solutions: the alliance of quality and productivity.

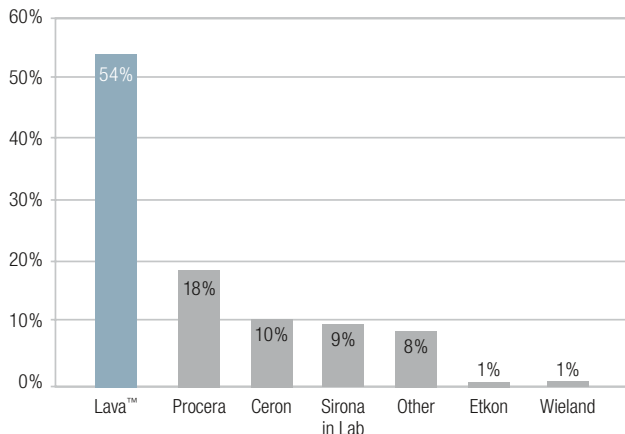


The 3M™ ESPE™ Lava™ Precision Solutions is a prime example of a well-coordinated system. It integrates digital technology and 3M ESPE's material science in an intuitive way to help dentists and labs improve their productivity while offering excellent oral care. From the digitisation of the model with our Lava scanner to virtual design with our software and the milling of specially formulated zirconia, the whole process has been designed to produce high-strength restorations with outstanding marginal fit and excellent aesthetics.

Lava precision solutions allow dentist and lab to work well together, too. Preparation and handling guidelines are adapted to dentists and their dental labs so everyone understands the whole process. Zirconia the more aesthetic alternative to PFM – Lava precision solutions by 3M ESPE will bring your start into the digital future.

The Lava brand: a zirconia that dentists trust.

**Dentists ask for Lava zirconia by name more than
all other zirconia brands combined**



Source: Key Group Market Research, July 2007. N of Samples = 129; Q. Of all your zirconia cases, what brand of zirconia is requested most often? Others: Captec, Zirkon, Kavo Everest, Our House Brand, Primatek (2), None (3). 3M ESPE 2008. All rights reserved.

Eight years of clinical history speak for themselves.

Our clinical history with Lava restorations dates back to the year 2000. International studies have demonstrated the excellent quality of this material, and many other studies are currently under way.



Stability: 5 years results out of clinical studies¹

Evaluation of Lava restorations after five years in vivo –
a good basis for your work.

The results:

- No failure
- No allergic reactions or adverse influences on the marginal gingiva
- High performance of posterior, zirconia-based Lava bridges

Trust

¹ Pospiech et al. IADR Abstract 0312, 2006
Raigrodski et al. IADR Oct. 2006 JPD
Sorensen et al. IADR Abstract 0270, 2006

Switch from PFM to Zirconia!

Lava lea

PFM:

Advantages:

- Longstanding experience
- High stability

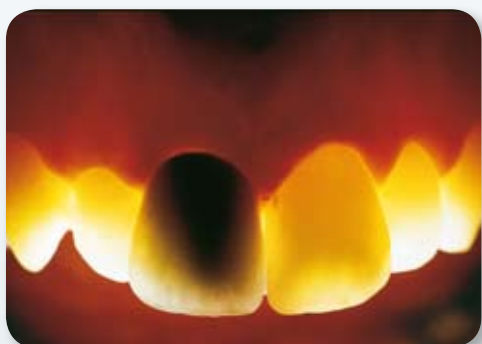
Disadvantages:

- Metal frame can show through
- Unfaced metal margins may become visible
- The metal can lead to intolerances and electrochemical reactions with other metals in the mouth

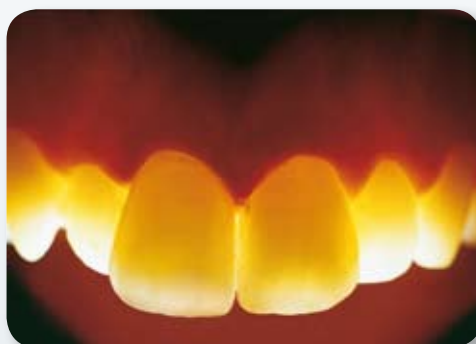
Lava™ Restorations:

Advantages:

- Natural-looking aesthetics
- Translucent natural teeth
- Metal-free and very best material
- No visible transitions at the gum margin
- Does not trigger electrochemical reactions in the mouth
- Long-term stable in the anterior and posterior areas



PFM



Zirconia

Zirconia is not alike

Zirconias are alike only in terms of chemistry. In fact, their quality depends on their purity, density, porosity, particle size and crystal structure, as well as the manufacturing process. Different manufacturing techniques can change the material properties – e.g. a few degrees of temperature difference in the sintering process.



Fully sintered Zirconia



Lava™ Zirconia
fully sintered



Other Zirconia
fully sintered

3M ESPE Lava Zirconia v. other zirconia.

Source: Both fotos taken by 3M ESPE. ©3M ESPE. All rights reserved.

ding quality

	Marginal fit	Stability	Aesthetics
Powder composition		✓	✓
Powder pressing	✓	✓	✓
Pre-sintering	✓		
Shading	✓	✓	✓
Final sintering		✓	✓

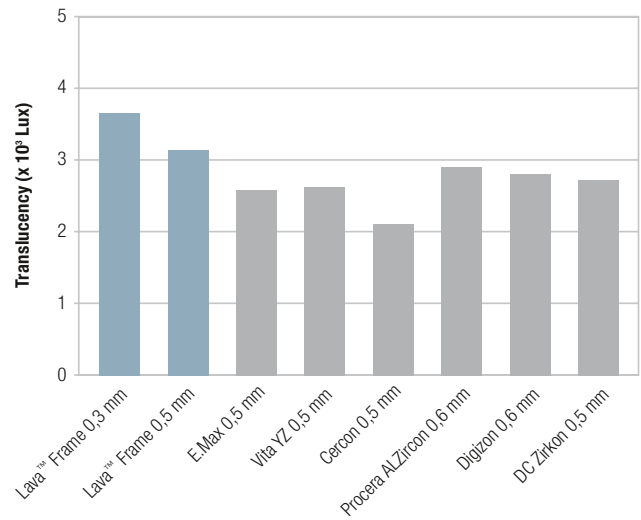
The Lava concept is oriented in accordance with nature. On the basis of individually colourable translucent zirconium oxide frameworks, you can create Crowns & Bridges with absolutely natural aesthetics.

(Source: Teamwork, MDT Jan-Holger Bellmann and Dr. Peter W. Hirschfeld, Jever)



Lava™ Zirconia: Translucency

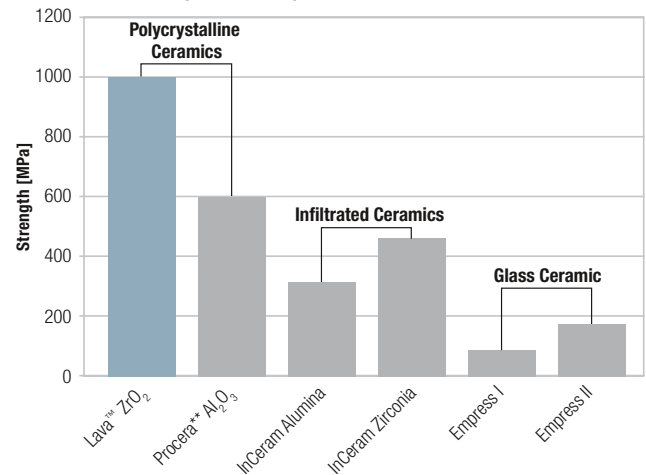
Natural-looking translucency



Source: P. Baldissara, A. Llukace J., L.F. Valandro, M.A. Bottino, R. Scotti (2006) ADM abstract #103

Lava™ Zirconia: Biaxial Fracture strength

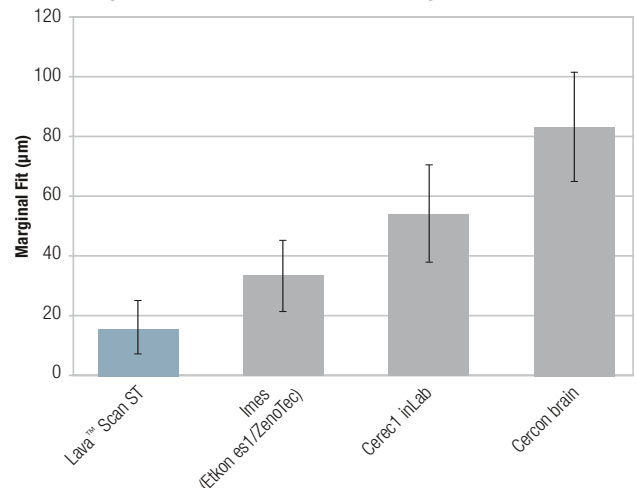
ISO 6872* (biaxial test)



* 3M ESPE
** Wagner et al J. Prost. Dent. 76[2] 1996

Lava™ Zirconia: Marginal Fit

Marginal Fit of all-ceramic 3-unit bridges



Source: Dr. F. Beuer et al. Universität München